

CARTON	PACK	NO. SKU'S
72	12	8

## PR162 CONTRAST BIB APRON



**Fabric:** 65% Polyester, 35% Cotton twill. 195gsm

**Colours** Black/Dark Grey, Black/Hot Pink, Black/Lime, Black/Red, Black/Turquoise, Brown/Natural, Black/Purple, Burgundy/Natural

**Sizes** One size

**Features**

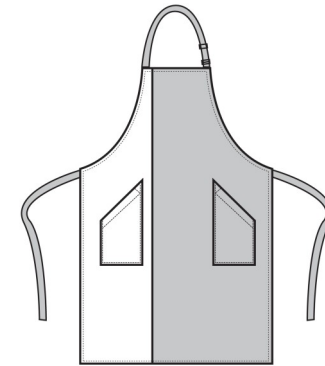
- Bib Apron with 1/3 in a contrast coloured panel
- Self fabric neckband
- 90cm self fabric ties
- Width, 72cm, Length, 86cm
- Sliding adjusting buckle
- Two front side pockets with slanted opening
- Centre of apron fits an A4 portrait print.

**Country of Origin** China

**Carton Dimensions** 60cm x 61cm x 24cm

**Carton Weight** 10.8kg

**VAT Code** 6211 43 1000



Colour	Pantone	C	M	Y	K
Black	Black	0	0	0	100
Brown	476	30	72	74	84
Dark Grey	431c	11	0	0	65
Hot Pink	214c	0	100	24	4
Lime	382	29	0	96	0
Natural	1205	0	5	31	0
Red	200	0	100	65	15
Turquoise	312	89	0	11	0
Burgundy	216c	0	83	34	47
Purple	269	82	98	5	26
Dark Grey	431c	11	0	0	65

### Marketing Description

A classic full bib Apron with a contrast coloured panel appearing along the length of the right hand side. The colours used on this apron form part of the 'Colours Collection' from Premier, so the customer can be assured of an exact colour match in uniforms across their service teams.



INDUSTRIAL LAUNDERING 85°C MAXIMUM